

- Legend**
- Order Limits
 - Order Limits - 10 km Buffer
- Environmental Constraints**
- Grade I Listed Building
 - Grade II* Listed Building
 - Grade II Listed Building
 - Scheduled Monument
 - Registered Park and Garden
 - Historic Landfill
 - Authorised Landfill

Infrastructure Planning (Applications: Prescribed Forms and Procedure) Regulations 2009 - Regulation 5(2)(a)

Mapping reproduced by permission of Ordnance Survey on behalf of HMSO. Contains OS data © Crown Copyright and database right 2020



PROJECT TITLE
Drax BECCS DCO

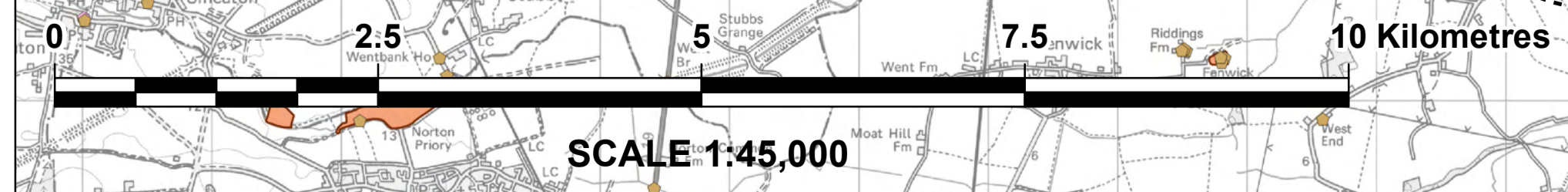
DRAWING TITLE
FIGURE 2.1 ENVIRONMENTAL CONSTRAINTS HERITAGE CONSTRAINTS SHEET 1 OF 4

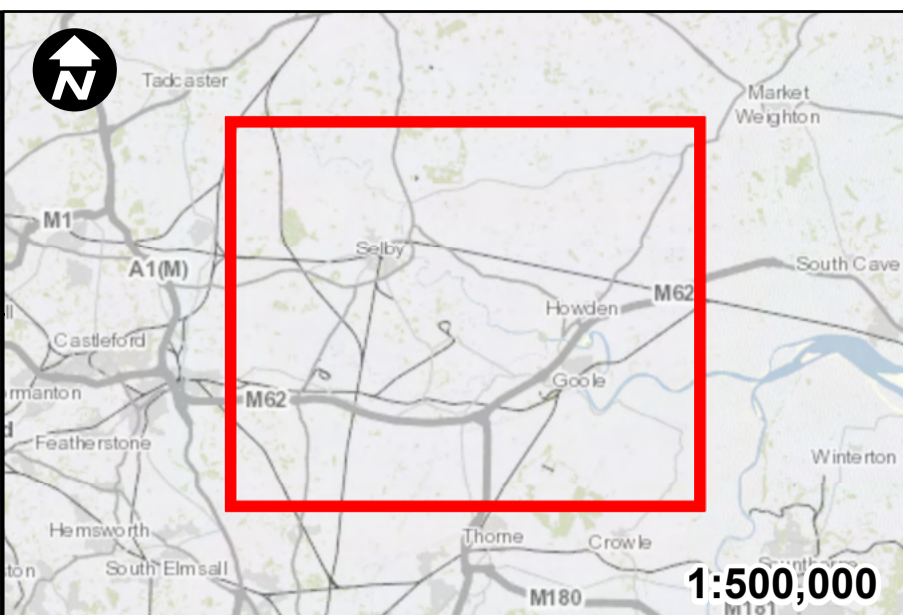
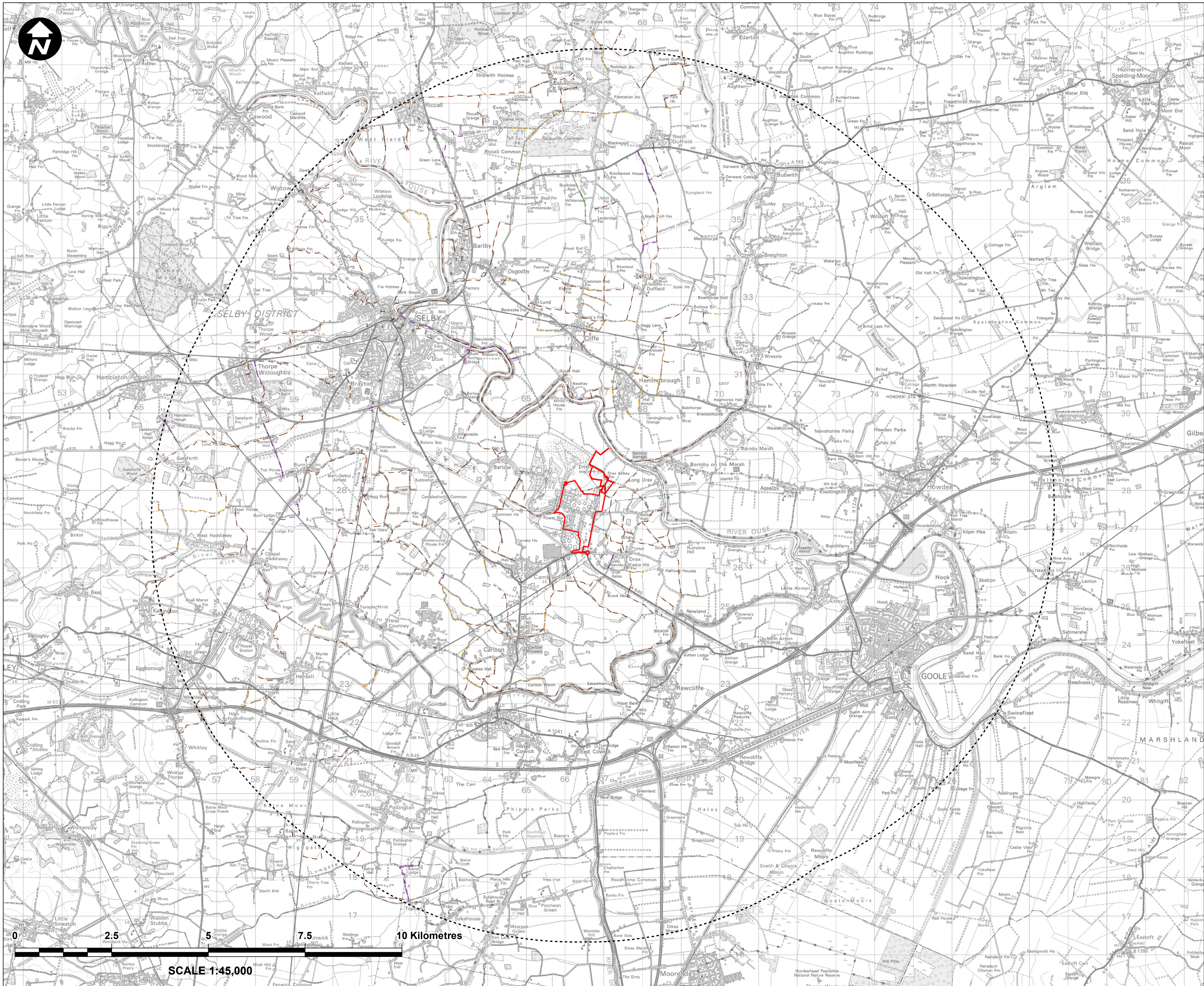
DRAWING STATUS
FOR ISSUE

DRAWN	CHECKED	APPROVED	AUTHORISED
LH	BS	MM	NA

SCALE @ A1 SIZE	DATE	REVISION
1:45,000	21/04/2022	P01

DRAWING NUMBER
 EN010120-PA-ES-6.2.2.1-Sheet1





- Legend**
- Order Limits
 - Order Limits - 10 km Buffer
 - Byway Open to All Traffic (BOAT)
 - Bridleway
 - Footpath
 - Unsealed Unclassified Roads (UUR)

Infrastructure Planning (Applications: Prescribed Forms and Procedure) Regulations 2009 - Regulation 5(2)(a)

Mapping reproduced by permission of Ordnance Survey on behalf of HMSO. Contains OS data © Crown Copyright and database right 2020



PROJECT TITLE
Drax BECCS DCO

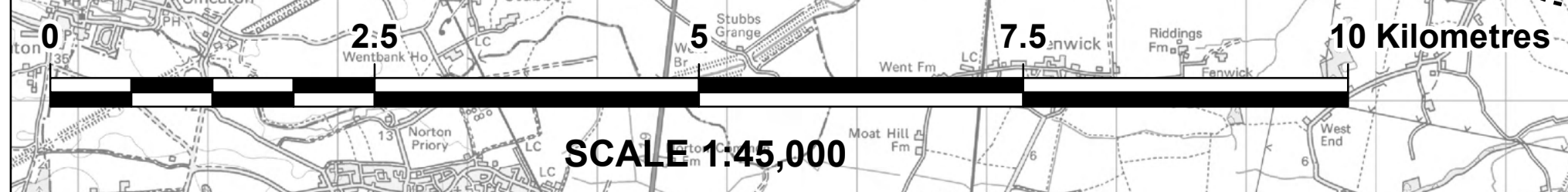
DRAWING TITLE
FIGURE 2.1 ENVIRONMENTAL CONSTRAINTS PLAN ACCESS ROUTES SHEET 2 OF 4

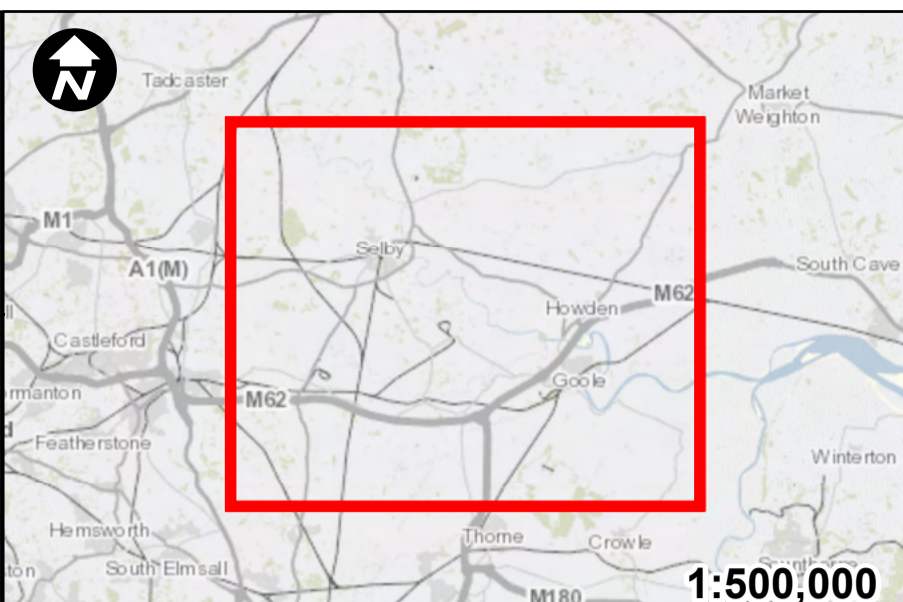
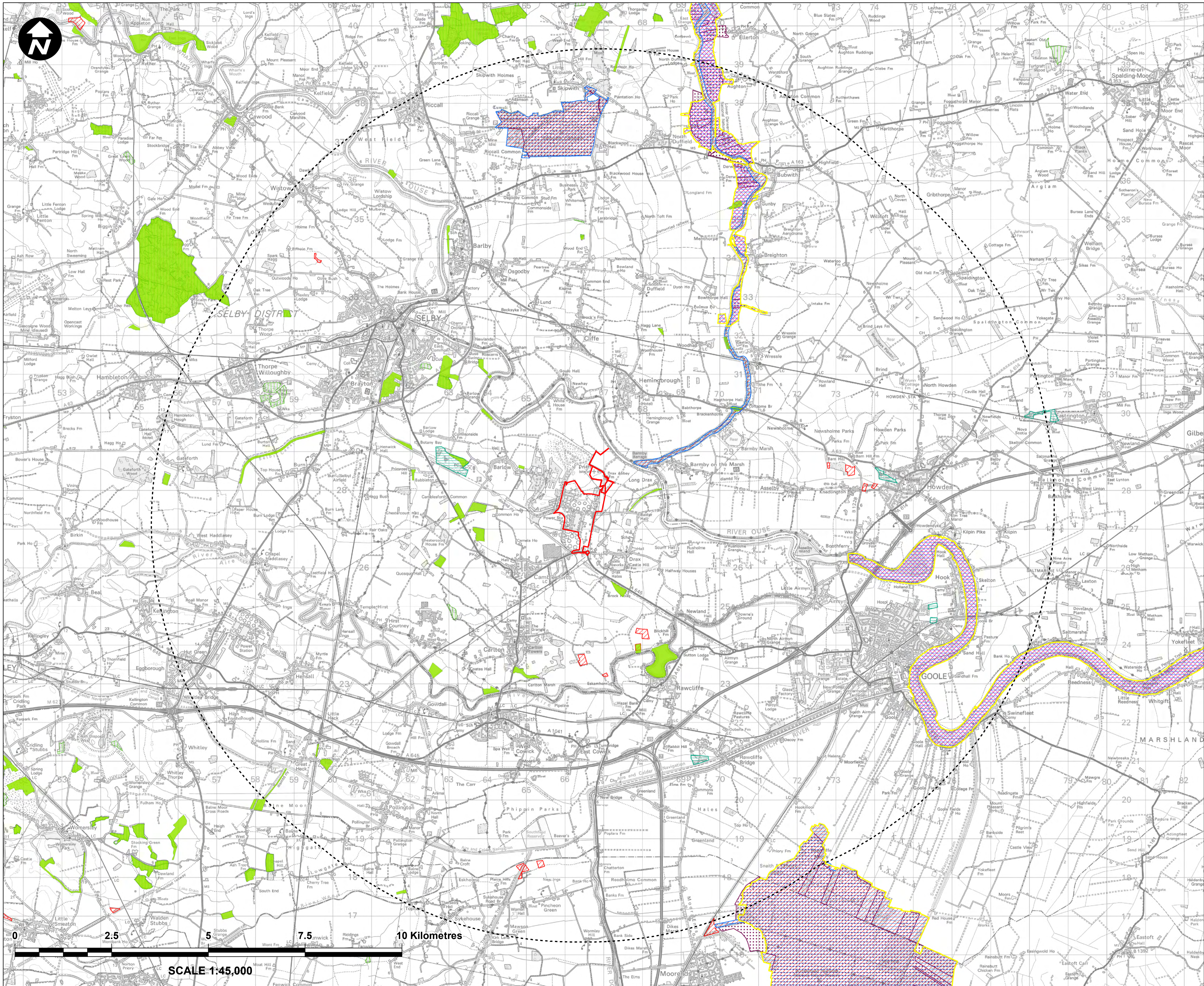
DRAWING STATUS
FOR ISSUE

DRAWN	CHECKED	APPROVED	AUTHORISED
LH	BS	MM	NA

SCALE @ A1 SIZE	DATE	REVISION
1:45,000	21/04/2022	P01

DRAWING NUMBER
 EN010120-PA-ES-6.2.2.1-Sheet2





- Legend**
- Order Limits
 - Order Limits - 10 km Buffer
 - Site of Importance for Nature Conservation
 - Local Nature Reserve
 - Ancient Woodland
 - Special Protection Area
 - Special Area of Conservation
 - Ramsar Site - Wetland of International Importance
 - Site of Special Scientific Interest
 - National Nature Reserve

Infrastructure Planning (Applications: Prescribed Forms and Procedure) Regulations 2009 - Regulation 5(2)(a)

Mapping reproduced by permission of Ordnance Survey on behalf of HMSO. Contains OS data © Crown Copyright and database right 2020



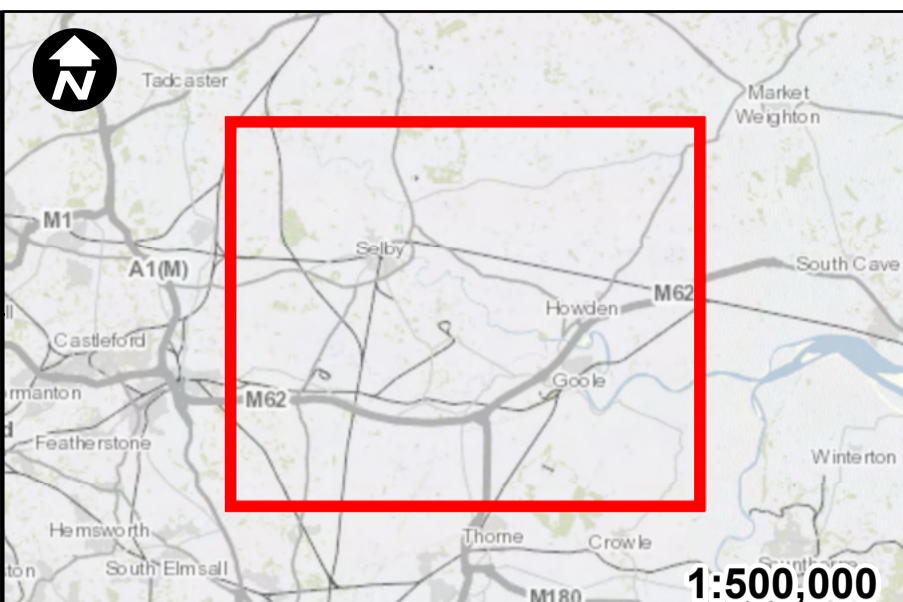
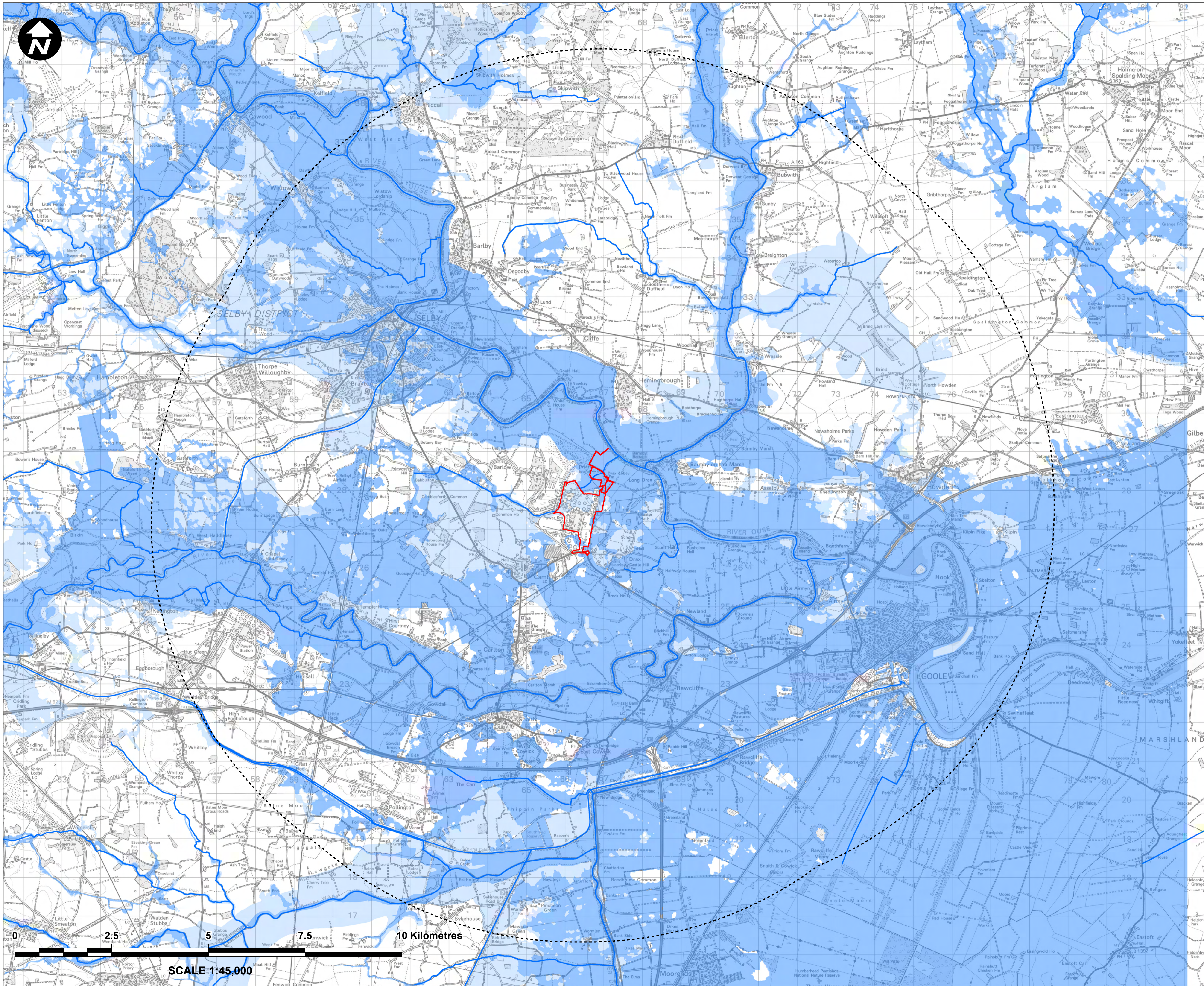
PROJECT TITLE
Drax BECCS DCO

DRAWING TITLE
FIGURE 2.1 ENVIRONMENTAL CONSTRAINTS PLAN ECOLOGICAL CONSTRAINTS SHEET 3 OF 4

DRAWING STATUS
FOR ISSUE

DRAWN	CHECKED	APPROVED	AUTHORISED
LH	BS	MM	NA
SCALE @ A1 SIZE 1:45,000		DATE 21/04/2022	REVISION P01

DRAWING NUMBER
 EN010120-PA-ES-6.2.2.1-Sheet3



- Legend**
- Order Limits
 - Order Limits - 10 km Buffer
 - WFD Waterbody
 - Flood Zone 2
 - Flood Zone 3

Infrastructure Planning (Applications: Prescribed Forms and Procedure) Regulations 2009 - Regulation 5(2)(a)

Mapping reproduced by permission of Ordnance Survey on behalf of HMSO. Contains OS data © Crown Copyright and database right 2020



PROJECT TITLE
Drax BECCS DCO

DRAWING TITLE
FIGURE 2.1 ENVIRONMENTAL CONSTRAINTS PLAN FLOOD ZONES AND WATERBODIES SHEET 4 OF 4

DRAWING STATUS
FOR ISSUE

DRAWN	CHECKED	APPROVED	AUTHORISED
LH	BS	MM	NA
SCALE @ A1 SIZE 1:45,000		DATE 21/04/2022	REVISION P01

DRAWING NUMBER
 EN010120-PA-ES-6.2.2.1-Sheet4